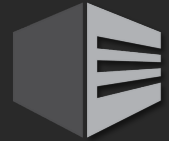
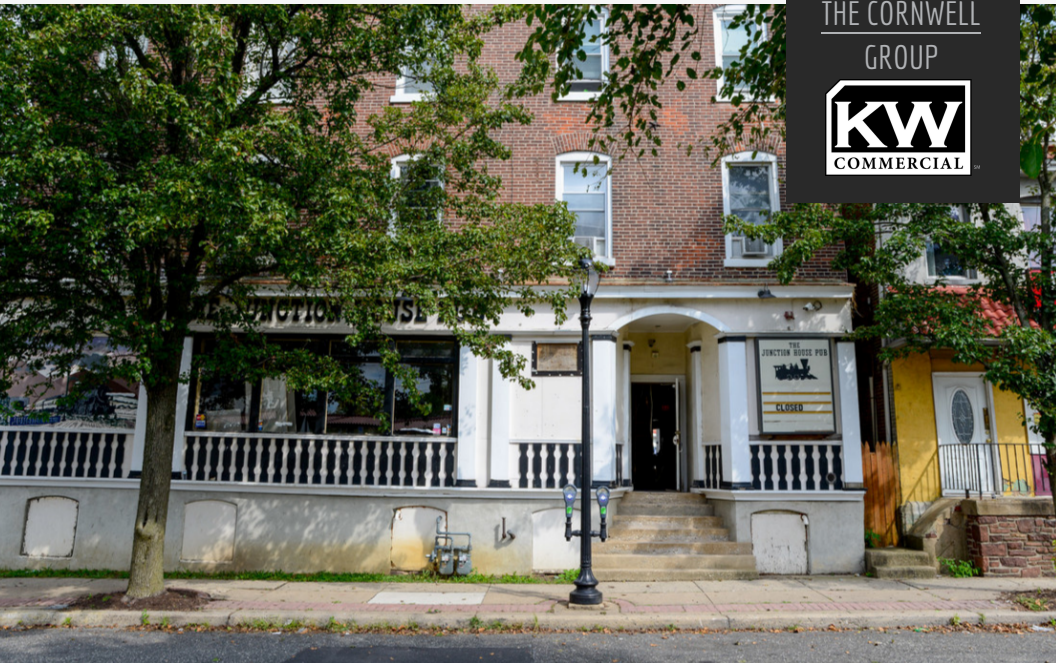


115 WALNUT STREET, LANSDALE
\$ 1,000,000 | PRO FORMA CAP 7%+



THE CORNWELL
GROUP



THE PROPERTY

- Great Value In The Heart Of Lansdale.
- Across the Street From The Septa-Lansdale Station.

PROPERTY FEATURES

- Land Area: 0.07 ac
- Total Square Feet: 7,510
- Stories: 4
- Residential Units: 6
- Commercial Units: 1
- 5 x 2 BR/1BA
- 1 x 1BR/1BA
- Street Parking
- High Historical Occupancy
- Current C/F + Upside

KW COMMERCIAL

2003 S. Easton Road #108
Doylestown, PA 18901
Office: 215-340-5700

ERIC R. CORNWELL

Direct: 602-617-8100
Email: erc@cornwell.co

SONNAY LEE

Direct: 215-259-8358
Email: slee@cornwell.co



SEE CORNWELL.CO/TEAMLISTINGS FOR MORE INFORMATION